

24 August 2012

A meeting of the **OBAN LORN & THE ISLES COMMUNITY PLANNING GROUP** will be held in the **MCCAIG SUITE, CORRAN HALLS, OBAN** on **WEDNESDAY, 12 SEPTEMBER 2012** at **2:00 PM**.

AGENDA

1. **APOLOGIES FOR ABSENCE**
2. **DECLARATIONS OF INTEREST**
3. **MINUTES OF PREVIOUS MEETING**
Minutes of meeting of Oban Lorn & the Isles Local Area Community Planning Group held on 13 June 2012 (Pages 1 - 4)
4. **SCOTTISH WATER UPDATE**
Jane McKenzie, Scottish Water
5. **UPDATE ON BIDS4OBAN**
Bids4Oban - Pauline Cameron
6. **BEAUTIFUL MINDS - OBAN**
7. **NEW COMMUNITY PLAN UPDATE**
Argyll & Bute Council – Eileen Wilson, Improvement & HR
8. **COMMUNITY SAFETY PARTNERSHIP EXCEPTION REPORTING TO AREA COMMUNITY PLANNING GROUP**
Argyll & Bute Council – Shirley MacLeod, Governance & Law
(Pages 5 - 8)
9. **FUNDING OPPORTUNITIES FOR EVENTS AND FESTIVALS**
Argyll & Bute Council - Laura Macdonald, Community & Culture
10. **CHANGE FUND PRESENTATION**
NHS Highland – Pat Tyrell
11. **POPULATION DECLINE**
Argyll & Bute Council – Eileen Wilson, Chris Carr, Improvement & HR (Pages 9 - 22)
12. **OBAN COMMUNITY ACTION PLAN**
Argyll & Bute Council - Laura Macdonald, Community & Culture (Pages 23 - 26)



- 13. UPDATE FROM SHORT LIFE WORKING GROUP**
Argyll & Bute Council - Laura Macdonald, Community & Culture
- 14. OBAN BYELAWS**
Argyll & Bute Council – Sheila MacFadyen, Governance & Law (Pages 27 - 32)
- 15. COMMUNITY RESILIENCE**
Argyll & Bute Council – Morag Brown, Improvement & HR (Pages 33 - 36)
- 16. CO PRODUCTION CONFERENCE**
Report by Glenn Heritage, Argyll Voluntary Action
- 17. PARTNER UPDATES**
Presentation by Strathclyde Fire & Rescue
Updates by other Partners

Contact: Eilidh FitzPatrick, Area Governance Assistant, 01369 707135

MINUTES of MEETING of OBAN LORN & THE ISLES LOCAL AREA COMMUNITY PLANNING GROUP held in the STUDIO THEATRE - CORRAN HALLS, OBAN on WEDNESDAY, 13 JUNE 2012

Present: Councillor Louise Glen-Lee (Area Lead Councillor)
Shirley MacLeod, Governance Manager, ABC
Chief Inspector Brian Auld, Strathclyde Police
Councillor Fred Hall, Ward 4
Veronica Kennedy, NHS Highland
Laura Macdonald, Community Development Officer
Councillor Iain MacDonald, Ward 5
Councillor Alasdair MacDougall, Ward 4
Eleanor MacKinnon, Third Sector Partnership
Councillor Roderick McCuish, Ward 4
Duncan Martin, Community Councils
Eileen Wilson, Community Planning Officer
Marri Malloy, Oban CC
Kenneth MacIntyre, Oban CC
Kate Connelly, Governance & Law
Superintendent Barry McEwan, Strathclyde Police
Jane Gillies, Area Governance Assistant
Councillor Elaine Robertson (from 3pm)

1. APOLOGIES FOR ABSENCE

Councillor Devon, due to other Council business
Councillor MacIntyre, due to other Council business.

2. MINUTES OF PREVIOUS MEETING

Minutes of the previous meeting held on 11th April were agreed as a correct record, subject to the following amendments:

Item 9: Replace the words "Eleanor MacKinnon" with "Pamela Lockhart";

Item 11: Remove the words "District General" in reference to the hospital;

Item 12: Add the following hyperlink to request a copy of the Better Community Engagement resource pack as a hard copy or on DVD:
Communitydevelopment@argyll-bute.gov.uk

3. PARTNERSHIP UPDATES

Eleanor MacKinnon: reported on a successful meeting of the Third Sector Forum with local Elected Members, and updated on Third Sector issues. Arising from this it was agreed that minutes of the full Council meeting held on 14 June 2012 be circulated in relation to details of public events licensing.

CI Brian Auld, Strathclyde Police: updated on policing matters in the area, highlighting areas of concern and advising on the Flexible Policing Team for priority areas.

Arising from this it was agreed that a meeting be arranged between Elected Members, Strathclyde Police and Oban Community Council to discuss parking issues.

A further meeting to be arranged with Sustrans and Dunollie representatives to discuss the cycle path.

4. LORN AND ISLANDS HOSPITAL TASK GROUP UPDATE

Veronica Kennedy, NHS Highland: updated on progress with Locality, Re-design and Mental Health issues at Lorn and the Islands Hospital, advising that the Dental Unit is progressing with work due to start in August; updating on vacancies and posts filled; and publicising the Mull Progressive Care Centre with a handover date in August.

5. COMMUNITY SAFETY FORUM & LINKAGES TO OTHER GROUPS ARGYLL AND BUTE COUNCIL - GOVERNANCE AND LAW

The Group considered a report updating and informing on the status and membership of the Local Community Safety Forums, and outlining where these lie in relation to other groups such as LACPG and the Argyll and Bute Community Safety Partnership.

Decision:

- (a) To note the current status of the CSFs in the Oban Lorn and the Isles Area;
- (b) To acknowledge the Community Safety Forum as a key strategic partner; and
- (c) To request Highlight and Exception reports be submitted from the Community Safety Forum for consideration by the LACPG.

(Ref: Report by Shirley MacLeod, Area Governance Manager, submitted)

6. NEW COMMUNITY PLAN - ARGYLL AND BUTE COUNCIL, IMPROVEMENT AND HR - EILEEN WILSON

It was agreed that this document be submitted to the August meeting for further discussion. The group further agreed that a Short Life Working Group, comprising Councillor Robertson, Chief Inspector Auld, Shirley MacLeod, Laura Macdonald and Eleanor MacKinnon be set up to develop a local identity for Oban Lorn and the Isles and to progress effective community planning / engagement for the area.

7. CRITICAL ACTIVITY RECOVERY PLAN

The Council's Strategic Management Team approved the establishment of a project to undertake the review of the Council's Business Continuity arrangements. The project was initiated on 1st February and is due to be completed by the 31st July 2012. This report presented by Kate Connelly provided details of consultation arrangements incorporated as part of the approved project plan

The Group:

- (a) Noted current plans to incorporate feedback with communities and other stakeholders at this stage of the review;
- (b) agreed to help facilitate local arrangements in order to maximise

input from local groups and organisations;

- (c) noted that since the project was initiated in February this year, a comprehensive mapping exercise has been completed to take account of changes in the Council's structure;
- (d) noted that the scope and nature of critical activities has been scrutinised, resulting in a significant reduction of the number of activities confirmed as critical. The revised list has not yet been confirmed but will undoubtedly include services to protect and assist vulnerable people e.g. children and elderly.

(Ref: Report by Kate Connelly, Project Officer, submitted)

8. THEMATIC GROUP REPORTS

The Group noted minutes from the Thematic Groups.

ARGYLL & BUTE COUNCIL**Oban Lorn and the Isles ACPG****CUSTOMER SERVICES****31th July 2012**

Community Safety Partnership Exception Reporting to Area Community Planning Group

1. SUMMARY

- 1.1 The purpose of this Paper is to advise the Area Community Planning group of the main tasks undertaken by members of the Community Safety Partnership working which have taken place in the last few months

2. RECOMMENDATIONS

That Area Community Planning Group Members:

- 2.1 Note the highlight/ exception reports provided.
- 2.2 Acknowledge the ongoing work of the group.
- 2.3 Consider whether there are any specific areas of work which the ACPG wishes the Community Safety Partnership to consider developing further.

3. DETAIL

- 3.1 Each Area Community Safety Forum has been working within the boundaries and to the stated goals of the Argyll and Bute Community Safety Partnership Strategy as originally adopted in 2008/9, which itself followed the national strategy. This strategy has recently been reviewed and is currently awaiting approval from the full partnership. The review has ensured that the strategy ties closely to the Single Outcome Agreement and to the plans of partners for service delivery

One positive outcome of the review is that the Community Safety priorities for the Argyll and Bute Forums have again been identified, and have been split into a number of priority action areas which can be reported upon. It is hoped that this reporting will provide a level of consistency to the metrics being applied across the entire Argyll and Bute Area, while at the same time retaining each areas individual character and priorities. The table below at appendix 1 is the exception report for the Oban Lorn and the Isles group and provides an indication of the of the work undertaken recently. The exception report is not

however an exhaustive listing of the community safety works being undertaken by each group or partner, and further detail re most topics can be made be available if requested

Due to the Elections in May this group has not met for some time, however papers on the next agenda will ask that a new chair be appointed and it is hoped that this will, reinvigorate the group.

4. IMPLICATIONS

- | | | |
|-----|-------------------------------------|---|
| 4.1 | Policy | Adoption of the proposal will assist in delivery and reporting of aspects of the SOA and the Community Plan |
| 4.2 | Financial | None, |
| 4.3 | Personnel | None |
| 4.4 | Equalities Impact Assessment | None. |
| 4.5 | Legal | None |

For further information, please contact Stephen Doogan Area Governance Officer tel 01546 604342

Oban Lorn and the Isles Community Safety Forum Exception Report				
Theme	Community Safety Outcome'	Issue and Actions	Comment	Outcomes/ Indicators (if available)
<p>Personal and Home Safety</p> <p><i>Considers the safety of the individual in areas such as accident prevention, online safety, fire safety, home security, bogus and scam callers</i></p>	<p>Camping Caravanning Summer safety initiative</p>	<p>This initiative underway, home safety visits being offered to caravan owners/occupants (both static and touring)</p>	<p>This Initiative kicked off in OLI with a visit at Ledaig. The service is also being offered to Traveller sites</p>	
<p>Travel Safety</p> <p><i>Includes issues that and individuals may encounter such as pedestrian safety, road traffic accidents, water safety, public transport safety</i></p>	<p>Bikers breakfast</p> <p>The Loch Awe Safety Company</p> <p>Loch awe Safety Code of Practice</p>	<p>Consider further locations</p> <p>Now in place to lead on loch awe safety initiatives e.g PPE bhouys</p> <p>COP launched and adopted</p>	<p>Inverary Event very successful, possibility of doing the event in other locations to be considered.</p> <p>A number of achievements already such as lifesaving equipment round the loch, appropriate signage, training being offered – taking the Sheriff's report into the 2010 tragedy as a starting point for activity. Following on from the implementation of the sherrifs recommendations a successful desktop emergency planning exercise took place in Spring/summer 2012</p> <p>The code is considered preferable to byelaws at this time</p>	
<p>Safety of Vulnerable Groups</p> <p><i>Deals with issues in relation to individuals or groups who may be vulnerable including elderly people, young children, victims of hate crime and sexual violence</i></p>	<p>TESSA Funding</p> <p>Safety Visits</p> <p>Child Safety</p>	<p>Education program now deployed to secondary schools covering cyber(and ordinary) bullying sexual violence</p> <p>Home Safety Visits and hazard spotting training available</p> <p>Talks and Information being distributed to all Nurseries</p>	<p>Funding in place for three years</p> <p>These visits can be arranged though SFR by calling 01546 605530 or 01631 569995.</p> <p>Can be accessed As above</p>	
<p>Environment Safety</p> <p><i>Environment safety concerns the aesthetics of communities and neighbourhoods and includes vandalism and criminal damage, graffiti, fly tipping, littering, dog fouling</i></p>	<p>Animal Movement initiative</p>	<p>Joint initiative with Environmental Health regarding animal movement</p>		

<i>and secondary fires</i>				
<p>Public Space Safety <i>This deals with people's safety in their communities and public perception of safety including anti social behaviour, public disorder and violence.</i></p>	<p>ASB</p> <p>New buildings</p>	<p>Group continues to Meet main participants are police, RSLs and Council</p> <p>Police crime prevention staff are conducting Architectural liaison meeting s with those progressing new builds</p>		

NRS' 2010-based population projections for Argyll and Bute

Chris Carr

Improvement and Organisational Development



Introduction

- 2010-based population projections for local authority areas published 29 February 2012
- Over projection period (2010-2035) in Argyll and Bute:
 - Total population will fall
 - Number of children will fall
 - Number of working age people will fall, despite increases in pension age
 - An increase in the number of people of pensionable age
 - Population aged 75+ to increase by 73.6%
- There will be more deaths than births
- Migration flows will not compensate

Background (1)

- NRS produces population projections every two years
- Projections
 - make assumptions about
 - Future fertility rates
 - Future mortality rates
 - Migration (hardest to predict)
 - Are based on past trends
- Projections affect policies; policies affect projections
- Projections are NOT predictions

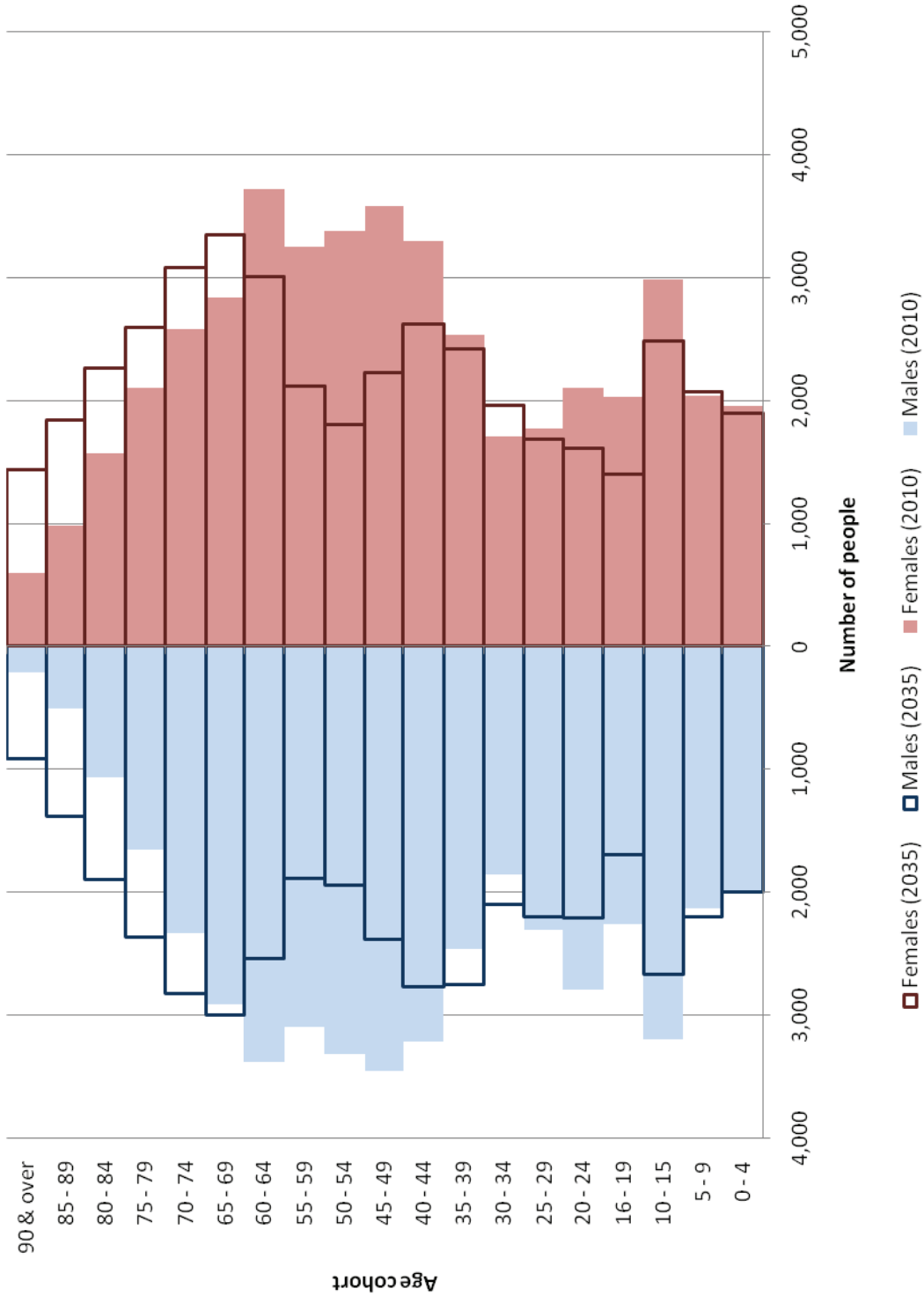
Background (2)

- Over the period 2010 to 2035:
 - Population of Scotland to increase from 5.2million to 5.7million
 - 32 Scottish local authorities:
 - 22 expected to show population growth
 - 10 expected to experience population decline.
- Argyll and Bute’s population is projected to decline.

Argyll and Bute

- Population change in Argyll and Bute (2010 to 2035)
 - 89,200 in 2010
 - 82,754 in 2035
 - Deaths will exceed births
 - Migration flows in longer term assumed to be zero
 - Age profile of population will change:
 - Total population will decrease by 7.2%
 - Number of 0 to 15 year olds will decrease by 8.7%
 - Number of working-age people will decrease by 14.4%.
 - Number of people of pensionable age will increase by 9.8%.
 - An increase of 73.6% in the population aged 75 and over.
 - These figures take account of changes in pensionable age.

NRS 2010-based population projections: 2010 base year and projections for 2035 compared (Argyll and Bute)



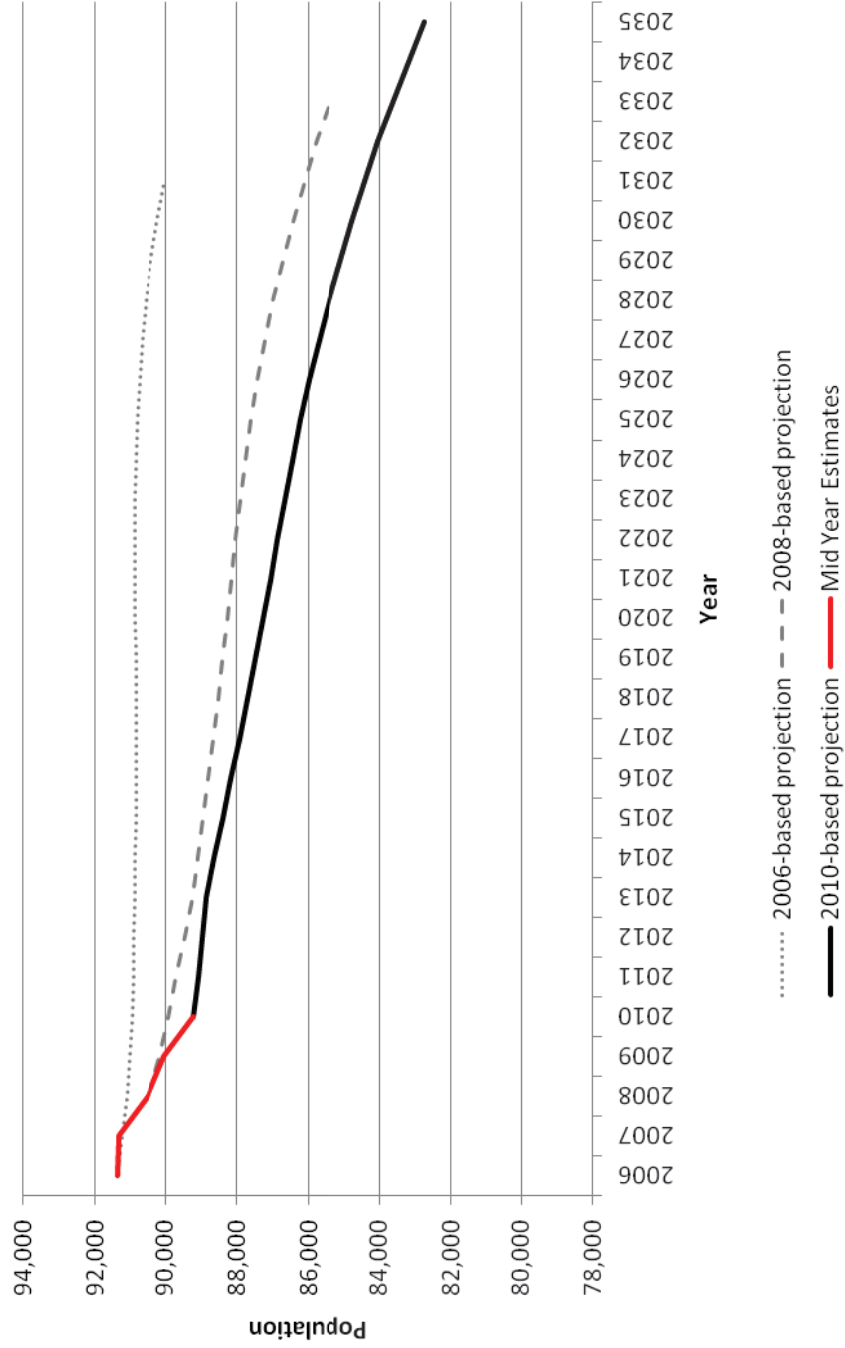
Argyll and Bute's population (thousands)

Age group	2010	2015	2020	2035
All ages	89.2	88.4	87.3	82.8
0-15	14.3	13.1	13.0	13.1
16-29	13.3	14.5	13.5	10.8
30-49	22.1	19.3	17.7	19.0
50-64	20.2	19.8	19.8	12.7
65-74	10.7	11.9	12.0	12.0
75+	8.7	9.8	11.1	15.1

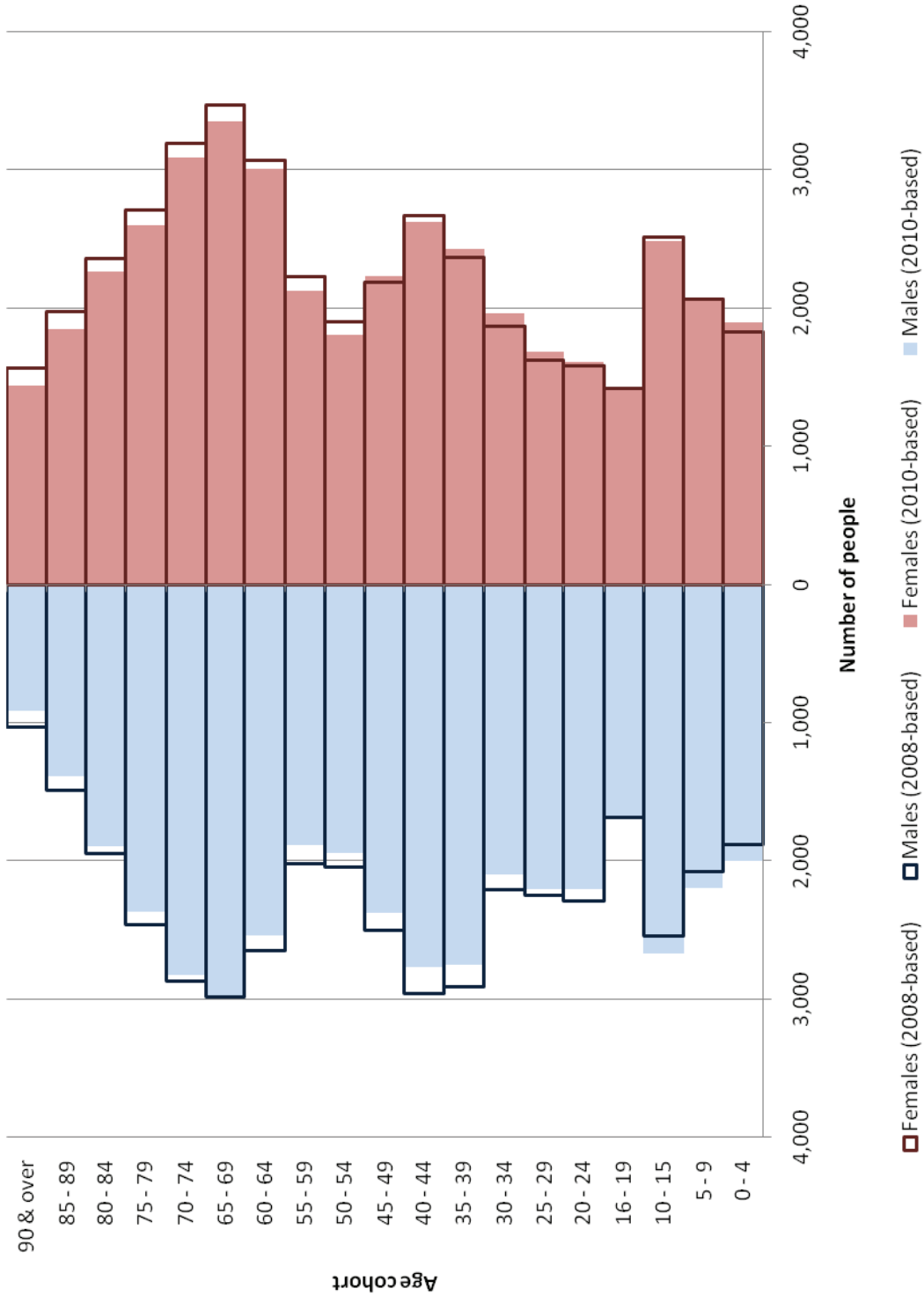
Comparisons with previous projections

- Previous projections also suggested a decrease in Argyll and Bute's population
 - 2008-based projections: 5.7% population decline over 25 years
 - 2010-based projections: 7.2% decline
- Reasons why 2010-based projections show a more rapid decline:
 - Net migration flows have been lowered

NRS Mid Year Estimates and 2006-, 2008- and 2010-based population projections for Argyll and Bute compared



NRS 2008- and 2010-based population projections for 2033 compared (Argyll and Bute)



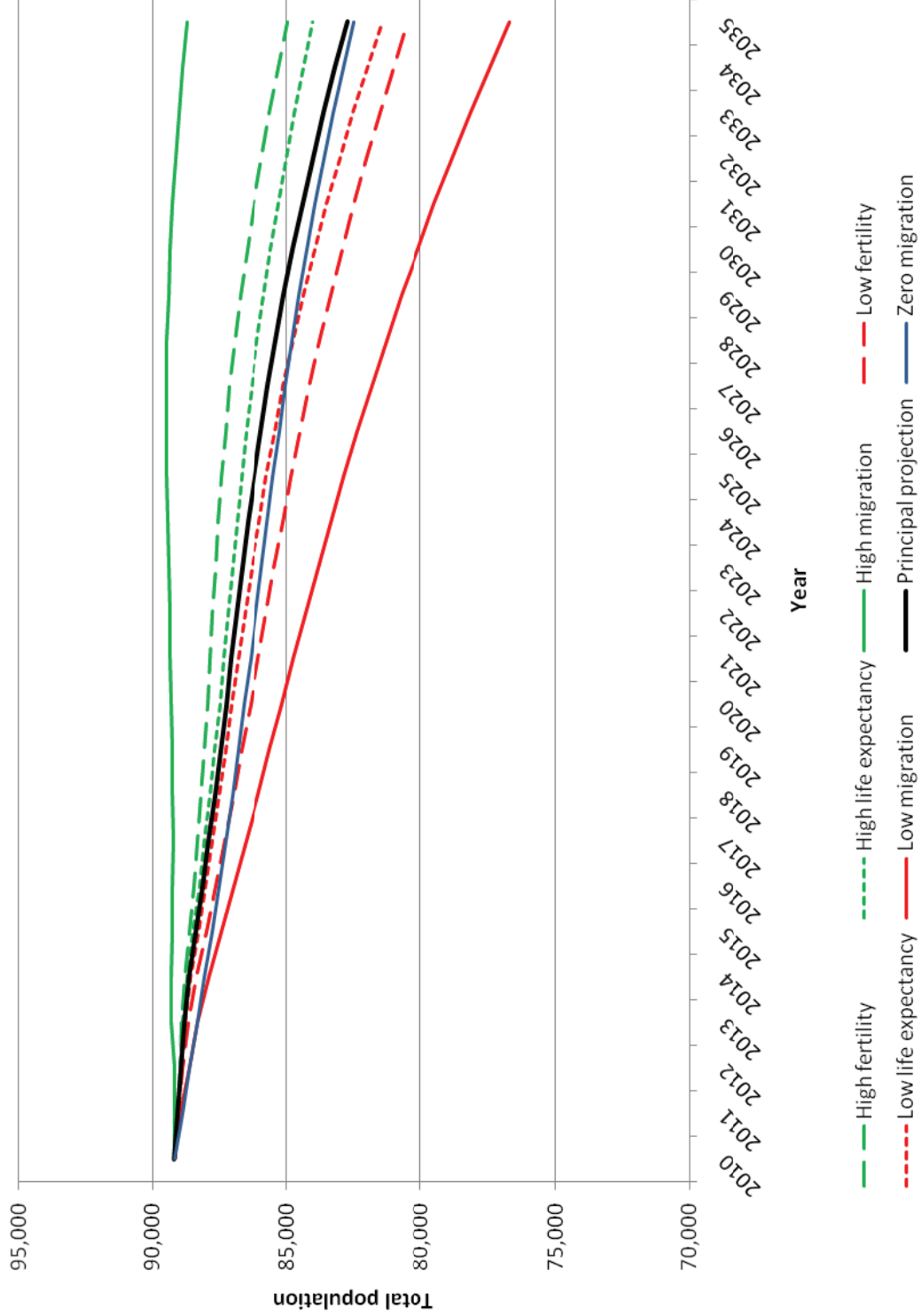
How accurate are projections?

- Overall accuracy depends on:
 - Accuracy of base year population
 - Accuracy of assumptions built into the model
 - Whether past trends will continue into future
- Can only tell how accurate projections are by looking at them retrospectively
- Calibration with Census 2011 will be helpful

Variant projections

- NRS has published:
 - Principal projection
 - Seven variant projections
- Variant projections suggest alternative, plausible scenarios for what might happen
- Note the impact of changing migration assumptions

NRS 2010-based Population Projections for Argyll and Bute: principal projection and variants



Conclusion

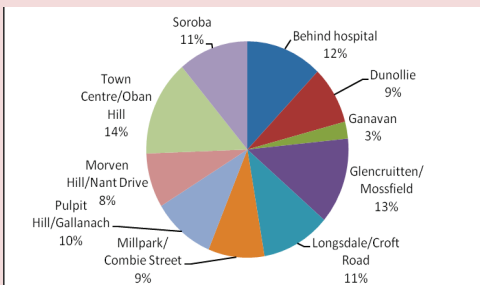
- Projections are not predictions
- With one exception, all variants and principal projection suggest population decline
- Projections are used to inform budget allocations
- How will these projections be used to inform policies?
- What are the impacts of these projections for service planning?

Oban Community Action Plan

The results...so far

The Oban Community Action Plan Steering Group was formed in December 2011 to pull together a community profile and to undertake a survey to gather the views of the people who actually live in Oban and to find out what was important to them.

There were 1,074 completed forms returned. The forms were distributed in three ways: within the Oban community by volunteers, to Oban High school pupils during school time



There are several existing projects and organisations operating in the town which will be best placed to act on the views expressed which relate to their area of expertise and to help to address the issues raised. Some linkages are obvious and projects are already underway e.g. Oban BIDs (improving businesses) Oban Phoenix (re-opening the cinema) CHORD (beginning to ease traffic congestion) whereas others will become clearer following discussion with the relevant groups involved

What do you like about Oban?

People living in Oban have a positive view of their town and their community. The most frequently made comments (39%) related to liking its size, the views, the bay, the facilities and services available, the shops and the variety of places to eat out- one comment "*small enough to be cozy – big enough to be interesting*" sums up the feeling of many.

The fact that everything was within walking distance was viewed positively as was being

beside the sea, having wonderful scenery, views from McCaig's Tower and Pulpit Hill, beaches and walks through the woods at Dunollie and Glencruitten. Facilities and services such as Atlantis Leisure, the hospital, the fact there is a college were all commented on as was the variety and quality of the restaurants and fish and chip shops and the number of shops available compared with other small towns. Positive comments were also made about the town gardens "*which are beautifully kept and a credit to the gardeners*" (2) and the hanging baskets.

Festivals, cultural activities and sports activities taking place within the town also were mentioned positively by 5%. Events such as the Winter Festival, Oban Hogmany, The Big Strip, the Pipe band playing in the square and the shinty at Mossfield all being individually commented on by some respondents. People also commented on Oban being a tourist town. This was generally positive but there were some comments giving the view that it should not be 'all about the tourists' and that the needs of people who live in Oban should not be overlooked.

What do you dislike about Oban?

Concerns about drugs within the town were also raised by a small number of individuals and a town centre resident commented specifically on *'the number of sirens day and night'*.

Unexpectedly, 2% of respondents identified 'the seagulls' as something they disliked about the town.

Mossfield Park, The Black Lynn, Argyll Square and Station Square were identified as areas that would benefit from improvement and 4% of respondents felt that a park would be beneficial as it provide an informal meeting place and a green space within town. Others commented that more use could be made of the beaches, with the Esplanade being mentioned as well as Ganavan, and cautioned against losing access to the hills and sea around the town.

34% of respondents commented on shopping opportunities and eating places. This category featured in the top three most frequently made comment across all age ranges with comments on the number of empty shops, the need to cater for locals as well as tourists - the lack of places to buy men's clothing specifically mentioned by several people - and a lack of well known fast food outlets (viewed as positive by some and negative by others) being made. The general impression given by the responses was that improved shopping facilities would improve the town as would a general upgrade of the phys-

ical environment which was thought to be fairly poor.

The poor condition of the roads, traffic congestion, parking and broken/uneven pavements was the top issue identified by the between 25 and 64 and the over 65's. The need for a multi storey car park was mentioned and some of the parking issues raised related to inconsiderate behaviour such as parking on pavements in residential areas. Dog dirt and litter were also frequently mentioned.

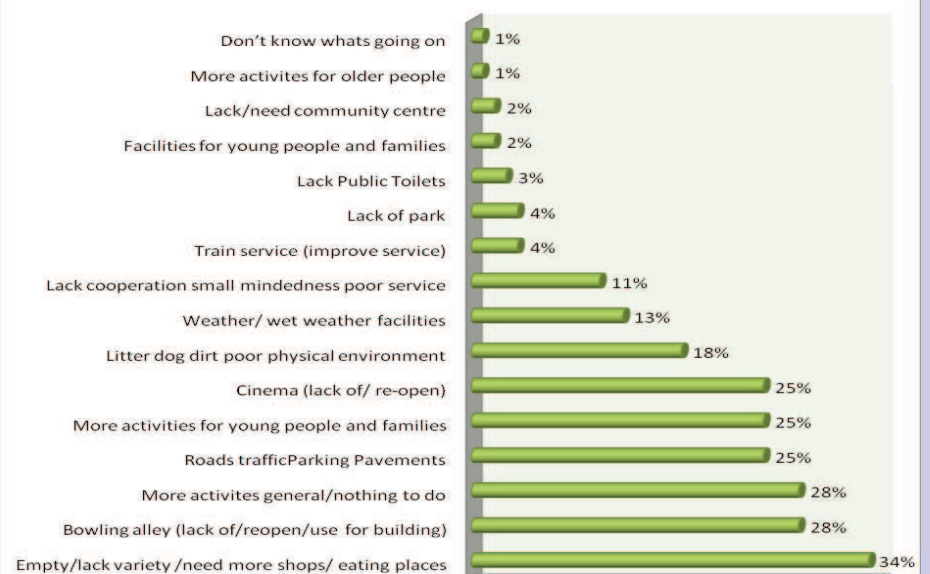
There were many comments around lack of activities, however there were also positive suggestions as to how this could be improved – many coming from young people – such as a bike park, more cycle paths, ice rink and paint ball. It was mentioned that there was a lack of places for teenagers to meet informally and 'just hang out'. The need for a 'proper' night-club was identified and there was support for more cultural activities as well as sports activities which were thought to be well catered for. There was a good level of support for the cinema re-opening (25%) and many

people (28%) commented on the bowling alley – some on the need to have a bowling alley, others on the fact that it had been lying unused for some time and suggesting alternative uses for the building.

Although the friendliness of people and the community spirit were rated highly, a significant number of comments (11%) related to more negative attitudes such as lack of co-operation, small mindedness and poor service. It was felt that more working together would be beneficial as would better coordination of activities. Using a large electronic notice board to let people know what was going on was suggested as was more use of the Oban Town Diary.

The weather was frequently commented on as was the need for wet weather facilities – covering George Street was perhaps the most radical suggestion. The train service was felt to be inadequate (too slow too infrequent) and as one under 25 year old commented *"the expense of getting to Oban from anywhere is not manageable for students"*.

Chart 1: what was disliked/could be improved by % age commenting (all Oban respondents)



What do others think of Oban?

Although the purpose of the report is to collate the views of those living in Oban, it is also useful to remember that Oban is the main service town for Lorn and acts as a hub for the area. This was reinforced by the number of people from out with Oban who completed and returned the survey

When answering the question *What do you like about Oban?*, 47 per cent of comments related to liking its size, the views, the bay, the facilities and services available, the shops and the variety of places to eat out. 28 per cent of comments related to the friendliness of the people and 4% of comments related to festivals, cultural activities and sporting activities which generally correspond with the views of the Oban people.

The comments made on what was disliked or could be improved as shown in the chart below.

Chart 2: Comments from people outwith Oban on what they dislike/could be improved in Oban



Next Steps

There are several existing projects and organisations operating in the town which will be best placed to act on the views expressed which relate to their area of expertise and to help to address the issues raised. Some linkages are obvious and projects are already underway e.g. Oban BIDs (improving businesses) Oban Phoenix (re-opening the cinema) CHORD (beginning to ease traffic congestion) whereas others will become clearer following discussion with the relevant groups involved

Argyll and Bute Council
Comhairle Earra Ghàidheal agus Bhòid



Customer Services
Executive Director: Douglas Hendry

Governance and Law

Local Area Community Planning Partnership
C/o Shirley MacLeod
Area Governance Manager
Customer Services
Argyll and Bute Council
Hill Street
Dunoon

Kilmory, Lochgilphead PA31 8RT
Tel: 01546 604192 Fax: 01546 604373
DX No: 599700 LOCHGILPHEAD
e-mail: charles.reppke@argyll-bute.gov.uk
Website: www.argyll-bute.gov.uk

Our Ref: CR/SM/000776
Your Ref:
Date: 26 July 2012

Dear Madam

BYELAWS PROHIBITING THE CONSUMPTION OF ALCOHOLIC DRINK IN DESIGNATED PUBLIC PLACES - OBAN

Argyll and Bute Council is reviewing the existing byelaw within Oban prohibiting the consumption of alcoholic drink in designated public places.

The Oban, Lorn and the Isles Area Committee recommended to the Council that a revision of the existing byelaw is investigated to include the Soroba, Glengallan and Pulpit Hill areas of Oban. The Executive Director – Customer Services was instructed to initiate the process for this revision.

Where Elected Members of Argyll and Bute Council have resolved to investigate an amendment to the geographical area of an existing byelaw the views of relevant parties are sought. You have been identified as a party whose views should be obtained and set out below is further information detailing the matters on which your views are sought.

I would be grateful if you would consider the proposal and provide a response to the questions posed together with any other information you feel might be relevant.

Proposal:

The proposal is to extend the area in Oban covered by the byelaw prohibiting the consumption of alcoholic drink in designated public places to include Soroba, Glengallan and Pulpit Hill areas of Oban.

Accompanying this letter is a plan which shows the geographical boundary of the Oban byelaw as it presently stands together with the proposed extension areas and the revised boundary clearly marked.

If all of the area shown on the plan is covered by a byelaw the effect would be that any person consuming alcohol in any place within that area to which the public have access would be committing a criminal offence.



Creation of Bye-Law:

Argyll and Bute Council has the power to create and promote byelaws in accordance with Sections 201, 202 and 203 of the Local Government (Scotland) Act 1973 as amended by Section 110 of the Civic Government (Scotland) Act 1982. Any proposal for the amendment to the byelaw must be subject to application to the Scottish Ministers for approval. Prior to this, notice must be given in newspapers circulating within the area where the byelaws are to have effect stating that application is to be made to the Scottish Ministers and that the byelaw may be inspected by the public who may object to the byelaw. If objections are made the Scottish Ministers may order a Public Local inquiry be held to hear the case for and against the byelaw.

Consultation:

It is essential to the process that there is consultation involving relevant and interested parties. It is considered that the relevant parties for such a consultation are Strathclyde Police, the Procurator Fiscal, the Licensed Trade Association, Community Safety Forum, Local Area Community Planning Partnership and the Community Council.

As part of the consultation process responses are requested from these bodies to the following:

13. Do you agree with the proposal to amend the existing area covered by the byelaw prohibiting the consumption of alcoholic drink within the environs of Oban?

If yes, please specify your reasons why.

If not, please specify your reasons why.

14. Do you agree with the proposed scope of the geographical area to be covered by the byelaw as shown on the plan annexed to this consultation document?

If you do not agree, please indicate on the map what area should be designated.

Please provide detailed reasons and any evidence available for this.

15. Are there any other comments you wish to make on the proposal to extend the Oban byelaw

Consultation Period:

Responses are requested by **24 August 2012**.

Responses should be sent to Argyll and Bute Council, Customer Services, Scotcourt House, 45 West Princes Street, Helensburgh G84 8BP.

A response will be collated in a report submitted to the Council as soon as possible after the close of the consultation period.

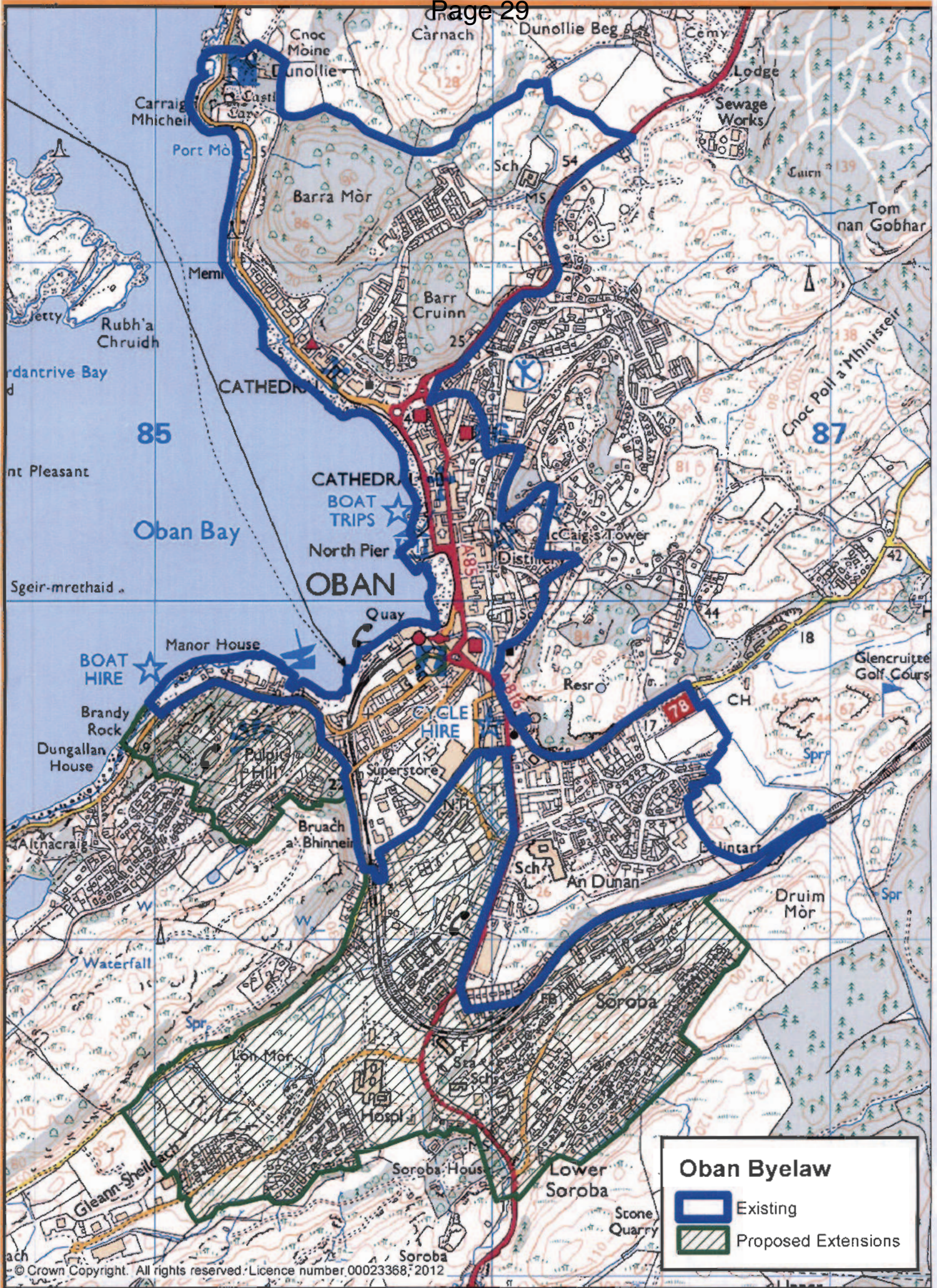
Yours faithfully

Stella M Macfarlane

Charles Reppke
Head of Governance and Law

If 'phoning please ask for: Robert Cowper





© Crown Copyright. All rights reserved. Licence number 00023368, 2012



Proposed Oban Byelaw Extensions July 2012





Customer Services
Executive Director: Douglas Hendry

Governance and Law

Community Safety Partnership
C/o Shirley MacLeod
Area Governance Manager
Customer Services
Argyll and Bute Council
Hill Street
Dunoon

Kilmory, Lochgilphead PA31 8RT
Tel: 01546 604192 Fax: 01546 604373
DX No: 599700 LOCHGILPHEAD
e-mail: charles.reppke@argyll-bute.gov.uk
Website: www.argyll-bute.gov.uk

Our Ref: CR/SM/000776
Your Ref:
Date: 26 July 2012

Dear Madam

**BYELAWS PROHIBITING THE CONSUMPTION OF ALCOHOLIC DRINK
IN DESIGNATED PUBLIC PLACES - OBAN**

Argyll and Bute Council is reviewing the existing byelaw within Oban prohibiting the consumption of alcoholic drink in designated public places.

The Oban, Lorn and the Isles Area Committee recommended to the Council that a revision of the existing byelaw is investigated to include the Soroba, Glengallan and Pulpit Hill areas of Oban. The Executive Director – Customer Services was instructed to initiate the process for this revision.

Where Elected Members of Argyll and Bute Council have resolved to investigate an amendment to the geographical area of an existing byelaw the views of relevant parties are sought. You have been identified as a party whose views should be obtained and set out below is further information detailing the matters on which your views are sought.

I would be grateful if you would consider the proposal and provide a response to the questions posed together with any other information you feel might be relevant.

Proposal:

The proposal is to extend the area in Oban covered by the byelaw prohibiting the consumption of alcoholic drink in designated public places to include Soroba, Glengallan and Pulpit Hill areas of Oban.

Accompanying this letter is a plan which shows the geographical boundary of the Oban byelaw as it presently stands together with the proposed extension areas and the revised boundary clearly marked.

If all of the area shown on the plan is covered by a byelaw the effect would be that any person consuming alcohol in any place within that area to which the public have access would be committing a criminal offence.

/...



Creation of Bye-Law:

Argyll and Bute Council has the power to create and promote byelaws in accordance with Sections 201, 202 and 203 of the Local Government (Scotland) Act 1973 as amended by Section 110 of the Civic Government (Scotland) Act 1982. Any proposal for the amendment to the byelaw must be subject to application to the Scottish Ministers for approval. Prior to this, notice must be given in newspapers circulating within the area where the byelaws are to have effect stating that application is to be made to the Scottish Ministers and that the byelaw may be inspected by the public who may object to the byelaw. If objections are made the Scottish Ministers may order a Public Local inquiry be held to hear the case for and against the byelaw.

Consultation:

It is essential to the process that there is consultation involving relevant and interested parties. It is considered that the relevant parties for such a consultation are Strathclyde Police, the Procurator Fiscal, the Licensed Trade Association, Community Safety Forum, Local Area Community Planning Partnership and the Community Council.

As part of the consultation process responses are requested from these bodies to the following:

10. Do you agree with the proposal to amend the existing area covered by the byelaw prohibiting the consumption of alcoholic drink within the environs of Oban?

If yes, please specify your reasons why.

If not, please specify your reasons why.

11. Do you agree with the proposed scope of the geographical area to be covered by the byelaw as shown on the plan annexed to this consultation document?

If you do not agree, please indicate on the map what area should be designated.

Please provide detailed reasons and any evidence available for this.

12. Are there any other comments you wish to make on the proposal to extend the Oban byelaw

Consultation Period:

Responses are requested by **24 August 2012**.

Responses should be sent to Argyll and Bute Council, Customer Services, Scotcourt House, 45 West Princes Street, Helensburgh G84 8BP.

A response will be collated in a report submitted to the Council as soon as possible after the close of the consultation period.

Yours faithfully

Charles Reppke

Charles Reppke
Head of Governance and Law

If 'phoning please ask for: Robert Cowper





© Crown Copyright. All rights reserved. Licence number 00023368, 2012



**Argyll and Bute Community Planning
Partnership**

**Oban, Lorn and the Isles
Community Planning Group
Date: 12 September 2012**



Title: Community Resilience Project Update Report

1. INTRODUCTION

- 1.1 The Project Initiation Document for the Council's Community Resilience project was presented to the Community Planning Partnership Management Committee at the meeting on 6 June. This report provides an update on the development of the project.
- 1.2 The Community Resilience project is informed by the lessons learnt from the severe weather of winter 2011/12 and subsequent power outages for protracted periods in some areas highlighted the need to improve power and communication resilience.
- 1.3 The development of wider community resilience is also seen as an area for significant improvement across Argyll and Bute.
- 1.4 The CPP management committee helped to identify key stakeholders who would be able to assist the project team in delivering the outcomes. The project team have now met with almost everyone and these meetings have been very informative, helping to shape the approach to the project and have already resulted in improved sharing of information.

2. RECOMMENDATIONS

- 2.1 That the Oban, Lorn and the Isles Community Planning Group notes the progress of the Community Resilience project to date.
- 2.2 That the Oban, Lorn and the Isles Community Planning Group endorses the approach to the distribution and promotion of the Scottish Government community resilience toolkits.
- 2.3 The Oban, Lorn and the Isles Community Planning Group promotes the project within Oban, Lorn and the Isles to encourage communities to complete their resilience plans and to highlight and promote the importance of self-resilience.

3. DETAIL

- 3.1 The project is split into two workstreams, organisational resilience and community resilience. Within each workstreams there is a further split into two themes.
- 3.2 The organisational resilience workstream will deliver improvements to Council buildings, communications and IT.
- 3.3 The project team are recommending the Council enters in to an agreement with a leading provider in the hiring of standby generators to provide backup power for 6 key offices. These offices are in Oban, Lochgilphead, Campbeltown, Helensburgh, Dunoon and Rothesay. For an annual fee the council will enter into a contract which will ensure that each office has a plan for loss of power, identifying the capacity of generator required and delivery and installation details. We will also install connection panels to connect these generators to the buildings. Generators can then be delivered to site or put on standby if severe weather is forecast.
- 3.4 In order to protect the Councils IT systems our servers will be supported by fixed generators in Helensburgh and the Council HQ in Kilmory.
- 3.5 The project team are also investigating opportunities for backup power arrangements at the large council owned rest centres.
- 3.6 The council's telephony system, Microsoft Lync, will be made more resilient as a result of the backup power arrangements. In addition, the project will also ensure that there is an emergency phone, which doesn't require power to operate, in each key office, care home, hostel and depot. The council has also taken ownership of a satellite phone trailer from the Scottish Government which can be towed to any location to provide additional communications via satellite.
- 3.7 The community resilience workstream is tasked with promoting resilience within Argyll at both an individual and community level.
- 3.8 The project team are working with the Scottish Government to promote individual resilience through the 2012/13 "Ready for Winter" campaign. Rather than focusing on one weather type, the campaign this year will promote individual resilience in an emergency situation. The Scottish Government are going to use real life stories to illustrate this and have approached the council with a view to using residents and workers in Bute.
- 3.9 The Scottish Government will launch their campaign on Monday 22 October and then embark on a programme of road shows around Scotland promoting the campaign. We have suggested that these

be held in Campbeltown and Rothesay this year. The council will promote these road shows via the website and other communication channels.

- 3.10 Community resilience will be improved by encouraging communities to complete the Scottish Government “Guide to emergency planning for community groups” and its associated resilience plan templates and information. These information packs will be prepared by the project team working with Strathclyde Police, Strathclyde Fire and Rescue, NHS Highland, Argyll Voluntary Action, Red Cross, WRVS, Strathclyde Emergency Coordinating Group and both power companies to make sure they are relevant for Argyll. They will include endorsements, information about roles and responsibilities, public safety information and key risks affecting the area, as well as templates and useful hints and tips. Examples of completed plans will also be provided. Everything will be presented together in a handbook.
- 3.11 Packs are going to be distributed towards the end of September by Argyll Voluntary Action and the police officers attending community council meetings are going to help endorse and encourage participation, even offering to scribe plans to ensure a consistent quality. AVA will triage responses and requests for further information from the community councils and collate plans that are returned. Copies of returned plans will be sent to all agencies involved. Plans received by the Council will be quality assured by the civil contingencies team and feedback given. Copies will be filed for future reference and the content will help to inform future training exercises.
- 3.12 The project team would also ask that the Community Planning Partnership encourages communities to complete their resilience plans and to highlight and promote the importance of self-resilience. Whilst it is no requirement to complete a plan, any plans produced will be very beneficial to all members of the community, the first responders and the Community Planning Partnership.

4. CONCLUSION

- 4.1 The project will deliver its objectives by improving resilience at an organisational, community and individual level. The project is on track to deliver its outcomes before the start of winter 2012/13
- 4.2 The support of the Community Planning Partnership will help to deliver improved resilience for communities by endorsing the approach taken and encouraging participation to maximise the uptake in completed Community Resilience plans.

For further information contact:

Morag Brown
IOD Programme Manager
Business Development

Tel: 01546 604199